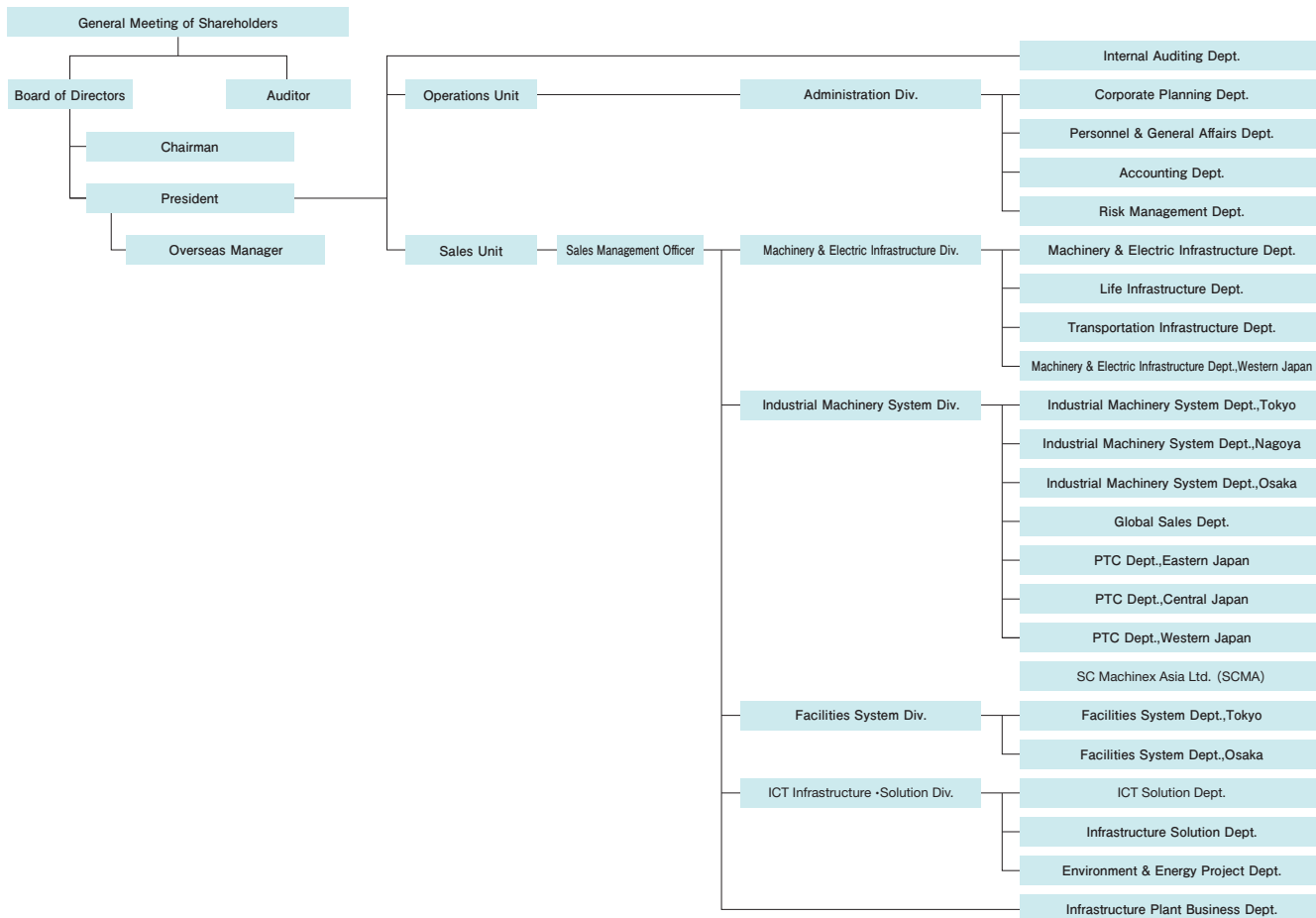


Organizational Chart



Address (Japan)

Tokyo	8th & 9th Floor, Harumi Island Triton Square Office Tower W1-8-8 Harumi, Chuo-ku, Tokyo 104-8548, Japan TEL:03-5560-6110 FAX:03-5560-6140
Nagoya	44th Floor, JR Gate Tower, 1-1-3, Meieki, Nakamura-ku, Nagoya-shi, Aichi 450-6644, Japan TEL:052-589-1760 FAX:052-589-1765
Osaka	12th Floor, Sumitomo Building 4-5-33 Kitahama, Chuo-ku, Osaka-shi, Osaka 541-0041, Japan TEL:06-6228-1811 FAX:06-6203-2872
Kobe	6th Floor, Mitsui Sumitomo Kaijo Kobe Building 1-1-18 Sakae-machi dori, Chuo-ku, Kobe-shi, Hyogo 650-0023, Japan TEL:078-333-3357 FAX:078-333-3367
Hiroshima	10th Floor, Ginsen Hiroshima Building 1-3-2 Kamiya-cho, Naka-ku, Hiroshima-shi, Hiroshima 730-0031, Japan TEL:082-248-8375 FAX:082-248-8415
Shikoku	20th Floor, Sunport Business Square 2-1 Sunport, Takamatsu-shi, Kagawa 760-0019, Japan TEL:087-822-7713 FAX:087-822-7708
Kashima	5th Floor, Kashima Central Building Shinkan 4-7-11 Onohara, Kamisu-shi, Ibaraki 314-0144, Japan TEL:0299-93-4373 FAX:0299-93-1929
Niihama	2nd Floor, Niihama Building 3-2-27 Shinden-cho, Niihama-shi, Ehime 792-0003, Japan TEL:0897-33-5181 FAX:0897-33-5197

Address (Overseas)

[Consolidated Subsidiary] Bangkok	SC Machinex Asia Ltd. 909 Ample Tower Building 15th Fl., Bangna-Trad Rd., Bangna, Bangkok 10260 TEL:66 (0)2017-0221 FAX:66 (0)2017-0220
[Assignee Companies] Shanghai	Sumitomo Corporation (Shanghai) Ltd. Shanghai Head Office 10F, Shanghai World Financial Center, 100 Century Avenue, Pudong New Area, Shanghai 200120, China TEL:+86-21-6146-1888
Guangzhou	Sumitomo Corporation (Guangzhou) Ltd. 3201A, 32F, Taikoo Hui Tower 1, 385 Tianhe Road, Tianhe District, Guangzhou 510620, China TEL:+86-20-8752-0068
Jakarta	PT. Sumitomo Indonesia Jakarta Head Office SUMMITMAS I 12th Floor, JL. Jenderal.Sudirman Kaveling 61-62, Jakarta Selatan 12190, Indonesia. TEL:+62-21-5251550