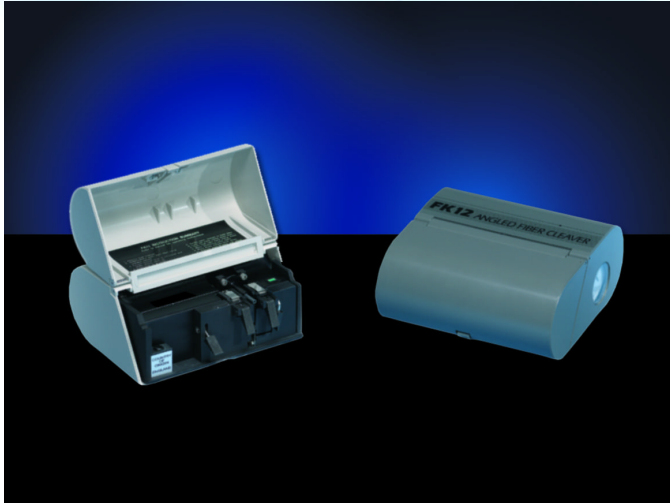


FK11 & FK12 Precision Fiber Optic Cleavers



FK11

The FK11 Precision Fiber Cleaver produces flat, clean, low end-angle cleaves every time. That means low-loss, high-strength fusion splices, optimum performance of packaged devices, and consistent results in measurement applications. The FK11 will also minimize the time required to make splices and maximize the output of test systems that rely on high-quality cleaves.

FK12

The FK12 Angled Fiber Cleaver sets the standard for low reflectance fiber termination of better than -60 dB. Fast and repeatable cleaving of fiber ends at user-selectable cleave angles (0° to 15°) make it possible for installers to reduce the reflectance of mechanical splices and other fiber terminations without the use of index-matching gels. The FK12 is the tool of choice when quick fiber termination and low return loss are required for minimum cost.

Features and Benefits

- Provides tension prior to cleaving for a clean cleave, ensuring no damage to glass.
- Long life with durable blade provides extended use.
- Versatile - cleaves a wide range of fiber types and sizes.
- Clean - no contamination during cleaving.
- Easy-to-use - fast terminations reduce installation or pigtailling costs.

Precision Fiber Cleaving is Easy

The fiber is secured in the clamps and put under controlled tension. When using the FK12, the torsion required to achieve the desired angle cleave angle is set. Tension is then applied, and the ultrasonic vibrating diamond blade is moved toward the fiber. The result, depending on the cleaver used, is a clean, flat or angled fiber that is ready for splicing or testing.

Specifications		
Model	FK11 Series	FK12 Series
Fiber Diameter ¹	80 µm to 200 µm	125 µm
Maximum Fiber Buffer Diameter	900 µm maximum	250 µm diameter
Minimum Cleave Length	6 mm (.23 inches) approximate	6 mm (.23 inches)
Cleave Angle Settings ²	n/a	0 ° to 15 °
Cleave Angle Repeatability	< 0.6 ° typical (95% of cleaves) ³	< 1 ° typical (2 standard deviations repeatability at 8 ° setting) ²
Blade	Diamond; estimated life > 20,000 cleaves	
General Specifications		
Case	ABS, non-slip feet, 6.25 mm (.24 inch) BSW thread tripod mount	
Battery	9V alkaline (MN1604); estimated battery life > 10,000 cleaves	
Weight	1.1 kg (2.4 lbs)	
Dimensions (H x W x D)	75 x 153 x 150 mm (3.0 x 6.0 x 5.9 inches)	
Operating Temperature	0 ° to 45 °C (-4 ° to 140 °F)	

Notes:

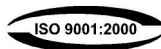
¹ Nominal cladding diameter.

² Standard 125 µm cladding diameter fiber.

³ Bare fiber.

FK11 Series

- FK11 For fibers with nominal coating diameters to 250 µm, clamps fiber 16 mm from cleave point.
- FK11-2 Soft-faced, left-hand clamp for clamping on buffer.
- FK11-4 For fibers with nominal coating diameters to 900 µm, clamps fiber 18 mm from cleave point.
- FK11-PK For cleaving fibers mounted in PK fiber holders
- FK11-LDF Large diameter fiber cleaver (140 µm to 400 µm)



Photon Kinetics includes products formerly branded as York Technology, PK Technology, GN Nettest and NetTest.

Photon Kinetics, Inc.

9305 SW Gemini Drive, Beaverton, OR 97008 USA
 Tel +1 503 644 1960
 Fax +1 503 526 4700

ISO 9001:2000 certified. Printed in the USA. Specifications subject to change without notice.
 "Photon Kinetics" and the "PK" logo are registered trademarks of Photon Kinetics.

