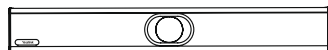


Yealink MeetingBar A20 Teams&Zoom Kit

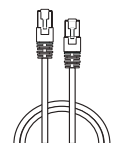


パッケージ内容:

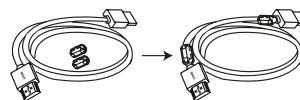
標準アクセサリ



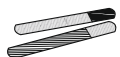
MeetingBar A20



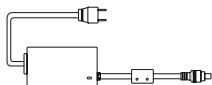
3m Ethernet ケーブル



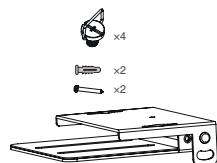
1.8m HDMI ケーブル ×2
(ディスプレイデバイス用)



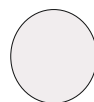
ケーブルタイ ×5



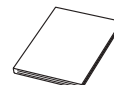
電源アダプター



取付ブラケットおよび
アクセサリ



シリコンパッド ×2



クイックスタートガイド

オプションのアクセサリ

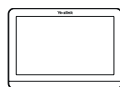


VCR20 - Teams

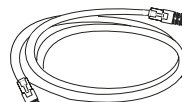


単 4 電池 ×2

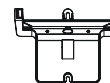
遠隔制御パケット (Teams エディション専用)



CTP18



7.5m Ethernet ケーブル



取付ブラケットおよびアクセサリ



ドライバー

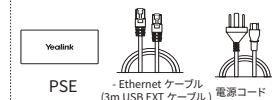


ケーブルロック
ボックス



3M マジック
テープ

ケーブルロックボックス



PSE

Ethernet ケーブル
(3m USB EXT ケーブル) 電源コード

タッチパネルパッケージ



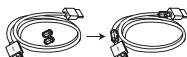
VCH51



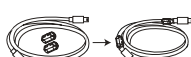
インターフェース
防護カバー



7.5m Ethernet
ケーブル



0.6m
HDMI ケーブル

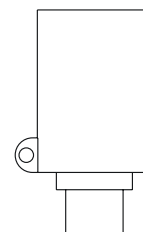


0.6m
USB Type-C ケーブル

VCH51 共有キット



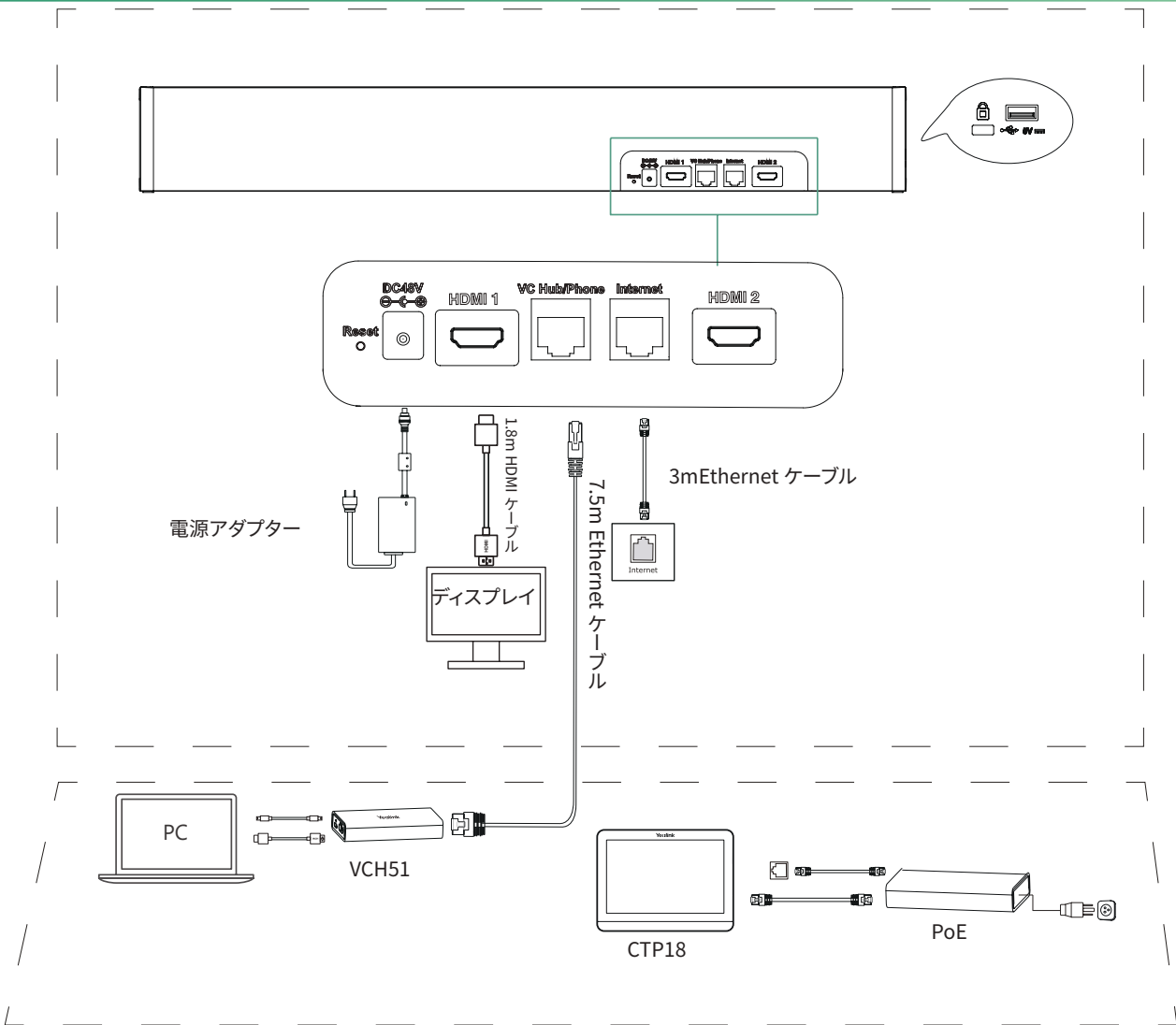
WPP20



Type-C アダプタ

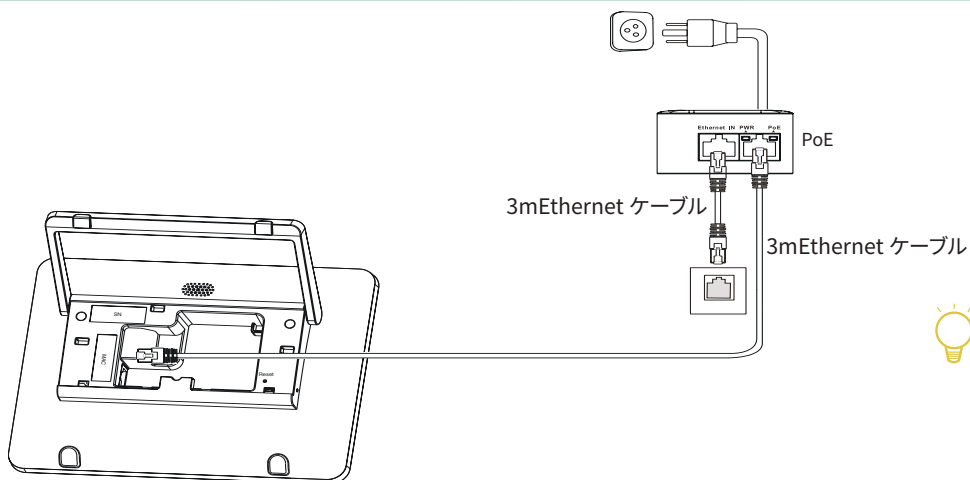
ワイヤレスプレゼンテーションボード

エンドポイント接続



💡 1 枚のディスプレイのみを使用する場合は、HDMI 1 ポートに接続してください。

CTP18 接続



💡 CTP18 と MeetingBar A20 が同じ LAN であることを確認してください。

CTP18 を A20-Teams に同期します：

CTP18 とエンドポイントの両方で同じ Microsoft アカウントにサインインし、画面のプロンプトに従って PIN コードを入力すると、システムが CTP18 と自動的にペアリングされます。

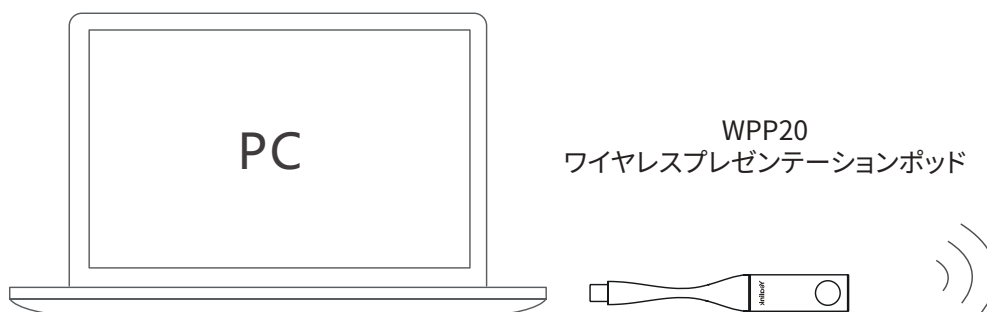
CTP18 を A20-Zoom に同期します：

CTP18 に A20 の IP アドレスを入力すると、システムは自動的に CTP18 とペアリングされます。

ワイヤレスコンテンツ共有

ワイヤレスコンテンツ共有に Yealink WPP20 ワイヤレスプレゼンテーションポッドを使用することができます。

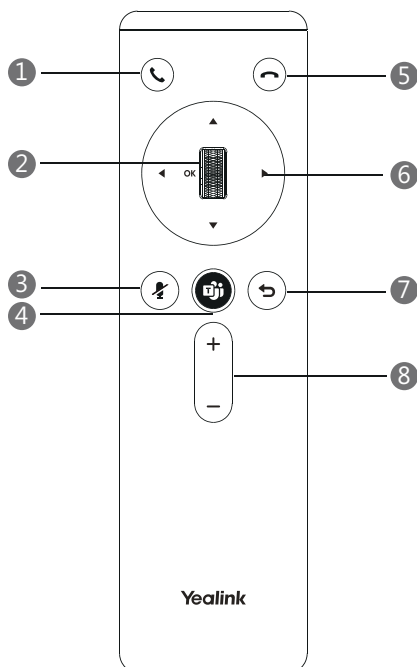
- 1.WPP20 を A20 の USB ポートに接続します。
- 2.3 秒間お待ちください、WPP20 LED インジケータが 2 度点滅した後に緑色に点灯します。
WPP20 は A20 に正常に同期されました。
- 3.WPP20 を PC に接続してください。



リモート制御およびケーブルタイの取付



VCR20 - Teams



- ① 応答キー
- ② スクロールホイール /OK キー
- ③ ミュートキー
- ④ Teams キー
- ⑤ 終了呼び出しキー
- ⑥ 移動キー
- ⑦ バックキー
- ⑧ 音量アップ / ダウン

💡 リモート制御がない場合は、Teams パージョンへのサインイン時にマウスを使用してください。

カメラ設定

カメラは設定することができます。

移動先 (Teams: [その他] > [設定] > [デバイス設定])

(Zoom: [設定] > [一般] > [システム設定])

露出設定、ホワイトバランス設定、グラフィックスを選択して、露出、ホワイトバランスなどを設定します。

移動先 (Teams: [その他] > [設定] > [デバイス設定])

(Zoom: [設定] > [一般] > [システム設定])

1. [フレーミングモード] フィールドで [手動]、[自動フレーミング]、[発話者追跡] を選択します。
2. カメラ設定をリセットするには、[カメラのリセット] を選択します。

Regulatory Notices

Operating Ambient Temperatures

- Operating temperature: +32 to 104°F (0 to 40°C)
- Relative humidity: 5% to 90%, noncondensing
- Storage temperature: -22 to +160°F (-30 to +70°C)

Warranty

Our product warranty is limited only to the unit itself, when used normally in accordance with the operating instructions and the system environment. We are not liable for damage or loss resulting from the use of this product, or for any claim from a third party. We are not liable for problems with Yealink device arising from the use of this product; we are not liable for financial damages, lost profits, claims from third parties, etc., arising from the use of this product.

DC symbol

⎓ is the DC voltage symbol.

Restriction of Hazardous Substances Directive (RoHS)

This device complies with the requirements of the EU RoHS Directive. Statements of compliance can be obtained by contacting support@yealink.com.

Safety Instructions

Save these instructions. Read these safety instructions before use!

The following basic safety precautions should always be followed to reduce risk of fire, electrical shock, and other personal injury.

⚠ General Requirements

- Before you install and use the device, read the safety instructions carefully and observe the situation during operation.
- During the process of storage, transportation, and operation, please always keep the device dry and clean.
- During the process of storage, transportation, and operation, please avoid collision and crash of the device.
- Please attempt not to dismantle the device by yourself. In case of any discrepancy, please contact the appointed maintenance center for repair.
- Without prior written consent, no organization or individual is permitted to make any change to the structure or the safety design of the device. Yealink is under no circumstance liable to consequences or legal issues caused by such changes.
- Please refer to the relevant laws and statutes while using the device. Legal rights of others should be respected as well.

⚠ Environmental Requirements

- Place the device at a well-ventilated place. Do not expose the device under direct sunlight.
- Keep the device dry and free of dusts.
- Place the device on a stable and level platform.
- Please place no heavy objects on the device in case of damage and deformation caused by the heavy load.
- Keep at least 10 cm between the device and the closest object for heat dissipation.
- Do not place the device on or near any inflammable or fire-vulnerable object, such as rubber-made materials.
- Keep the device away from any heat source or bare fire, such as a candle or an electric heater.
- Keep the device away from any household appliance with strong magnetic field or electromagnetic field, such as a microwave oven or a refrigerator.

⚠ Operating Requirements

- Do not let a child operate the device without guidance.
- Do not let a child play with the device or any accessory in case of accidental swallowing.
- Please use the accessories provided or authorized by the manufacturer only.
- The power supply of the device shall meet the requirements of the input voltage of the device. Please use the provided surge protection power socket only.
- Before plugging or unplugging any cable, make sure that your hands are completely dry.
- Do not spill liquid of any kind on the product or use the equipment near water, for example, near a bathtub, washbowl, kitchen sink, wet basement or near a swimming pool.

Yealinkについて

Yealink (株式会社コード: 300628) は、クラス最高の品質、革新的なテクノロジー、ユーザーフレンドリーなエクスペリエンスを実現する、ビデオ会議、音声通信、コラボレーションソリューションに特化したグローバルブランドです。140以上の国と地域で有数の優れたプロバイダーであるYealinkは、SIP電話機の出荷数の世界マーケットシェアでNo.1にランクインしました (Global IP Desktop Phone Growth Excellence Leadership Award Report, Frost & Sullivan, 2019)。

技術サポート

ファームウェアのダウンロード、製品ドキュメント、FAQなどについては、Yealink WIKI(<http://support.yealink.com/>)にアクセスしてください。

より良いサービスのために、Yealinkチケットシステム (<https://ticket.yealink.com>) を使用してすべての技術的な問題を送信することを強くおすすめします。

- Do not tread on, pull, or over-bend any cable in case of malfunction of the device.
- During a thunderstorm, stop using the device and disconnect it from the power supply. Unplug the power plug and the Asymmetric Digital Subscriber Line (ADSL) twisted pair (the radio frequency cable) to avoid lightning strike.
- If the device is left unused for a rather long time, disconnect it from the power supply and unplug the power plug.
- When there is smoke emitted from the device, or some abnormal noise or smell, disconnect the device from the power supply, and unplug the power plug immediately. Contact the specified maintenance center for repair.
- Do not insert any object into equipment slots that is not part of the product or auxiliary product.
- Before connecting a cable, connect the grounding cable of the device first. Do not disconnect the grounding cable until you disconnect all other cables.

⚠ Cleaning Requirements

- Before cleaning the device, stop using it and disconnect it from the power supply.
- Use a piece of soft, dry and anti-static cloth to clean the device.
- Keep the power plug clean and dry. Using a dirty or wet power plug may lead to electric shock or other perils.

⚠ ENVIRONMENTAL RECYCLING



Never dispose of the device with domestic waste

Ask your Town Council about how to dispose of it in an environmentally friendly way. The cardboard box, plastic packaging and player components may be recycled in accordance with prevailing recycling regulations in your country.

Always adhere to prevailing regulations

Those who fail to do so may be fined or prosecuted in accordance with the law. The crossed out garbage can that appears on the device means that when it has reached the end of its useful life, it should be taken to a special waste disposal centre and treated separately to general urban waste.

Troubleshooting

The unit cannot supply power to Yealink device.

There is a bad connection with the plug.

1. Clean the plug with a dry cloth.
2. Connect it to another wall outlet.

The usage environment is out of operating temperature range.

1. Use in the operating temperature range.

The cable between the unit and the Yealink device is connected incorrectly.

1. Connect the cable correctly.

You cannot connect the cable properly.

1. You may have connected a wrong Yealink device.
2. Use the correct power supply.

Some dust, etc., may be in the port.

1. Clean the port.

Contact your dealer or authorized service facility for any further questions.

Contact Information

YEALINK NETWORK TECHNOLOGY CO.,LTD.

309, 3rd Floor, No.16, Yun Ding North Road, Huli District, Xiamen City, Fujian, P.R.C

YEALINK (EUROPE) NETWORK TECHNOLOGY B.V.

Strawinskylaan 3127, Atrium Building, 8th floor, 1077ZX Amsterdam, The Netherlands

YEALINK (USA) NETWORK TECHNOLOGY CO., LTD.

999 Peachtree Street Suite 2300, Fulton, Atlanta, GA, 30309, USA

Made in China



YEALINK(XIAMEN) NETWORK TECHNOLOGY CO.,LTD.

Web: www.yealink.com

Copyright©2021 YEALINK(XIAMEN) NETWORK TECHNOLOGY CO.,LTD.All rights reserved.